



# MoTEC 2025

## Getting There

The Queen Mary Hotel is located approximately 22 mi (36 km) southeast of Los Angeles International Airport (LAX), approximately a one-hour trip by taxi/Uber/Lyft under most traffic conditions. Ample on-site parking is available for those arriving by car, at a negotiated rate of \$15 per night.

## Check-In & Registration

The hotel lobby and front desk at the Queen Mary are on A deck (Level 3), immediately off the elevator up from street level. Meeting registration will take place at a table across from the front desk. Name tags and other items will be provided, along with complimentary tickets for (two per participant per night) for the five evenings of the meeting (Sunday through Thursday). Beer, bottled water and mixed drinks will be available for purchase. Tickets for the whale watch Wednesday afternoon for those who signed up will also be distributed at registration.

## WiFi

Wifi is available throughout the ship, but electrical in the main meeting room (the Queen's Salon, see below) is rather limited. Please be sure to fully charge your electronic devices prior to the sessions. Also, be aware that the promenade and central areas of the ship, including hallways to the staterooms, are sheltered but not walled off from the elements. Evening temperatures in Long Beach can drop below 60°F (15°C) in July, which may seem quite chilly after highs around 85°F (30°C) during the day. Please pack/dress accordingly.

## Opening Reception

The Sunday evening reception (after dinner and the keynote lecture) will be in the Verandah Room and Deck (stern, Sun Deck), but please be aware that access is via a flight of stairs (for those who may have mobility issues). Back in the day, the Verandah Room was the First Class nightclub.

## Meals

All meals, including the banquet, will be in the Royal Salon (aft, Promenade Deck), using round tables seating eight or ten. Meals during the week will be buffet-style, the Wednesday evening banquet a sit-down affair. The Royal Salon has an adjacent room with harbor views that will be at our disposal. Wednesday lunch will be outside on the Capstan Deck (stern, Promenade Deck). Detailed meal plans are being finalized.

## Coffee Breaks

Coffee/refreshment breaks will be in the Queen's Salon, with spill-put onto the Promenade. Water stations will be available throughout the meeting.

## Speaker Sessions

All sessions will be held in the Queen's Salon (amidship, Promenade Deck). Preferred seating is "classroom" (pictured below), but it may be necessary to have round tables seating five (all facing forward). The QM will provide a podium for the speaker and a small table for the session chair. An administrative desk will be located in a small room at the back.

## Poster Sessions

Posters will be around the periphery of the Queen's Salon (amidship, Promenade Deck), and will be up for the duration of the meeting. Upholstered chairs and high-boy tables will be provided. The room has a built-in bar for serving drinks. Complimentary red and white wines are available with the tickets provided at registration (two glasses per night). Beer, bottled water and mixed drinks will be available for purchase.

## Wednesday Afternoon Excursion

The Wednesday afternoon whale watch will be with Ocean Breeze Cruises. Departure will be from a dock across the small bay from the Queen Mary, and can be reached either by water taxi (\$1 fare) or on foot (a 30-min, 1.3 mi/2 km walk from the QM).

Participants will be on their own for dinner Wednesday evening, prior to the evening speaking session beginning at 7:30 PM. There are two restaurants on board the QM, but participants may wish to eat in town. Several restaurants in the area easily reached by water taxi from the QM (or the Ocean Breeze dock) and participate in a Show Your Badge discount program that offers discounts to meeting participants.



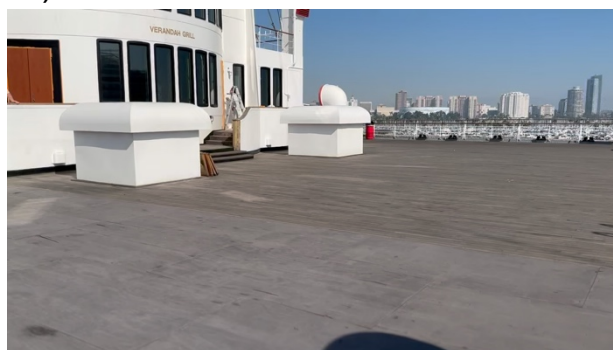
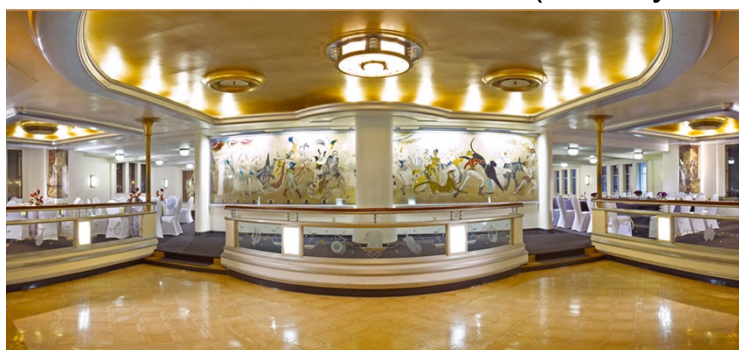
Queen's Salon, amidship Promenade Deck (speaker/poster sessions, coffee breaks)



Royal Salon, aft Promenade Deck (meals, including banquet)



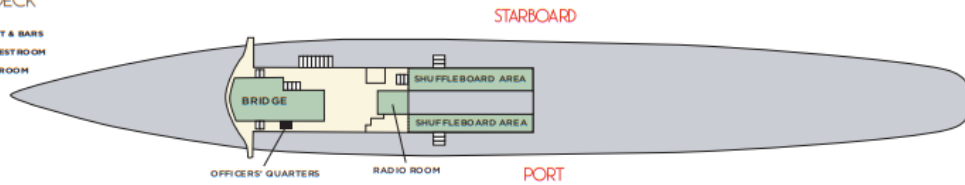
Verandah Grill, stern Sun Deck (Sunday reception)



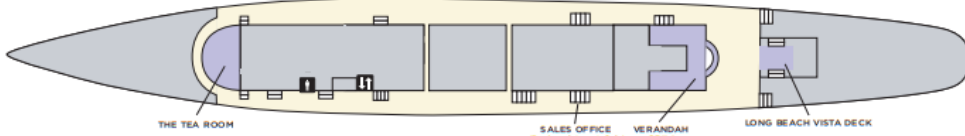


## SPORTS DECK

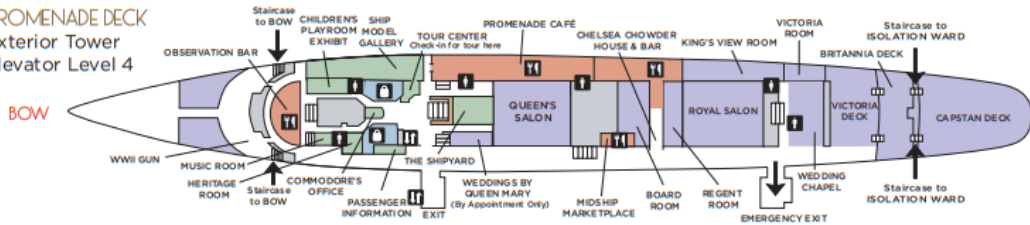
- RESTAURANT & BARS
- WOMEN'S RESTROOM
- MEN'S RESTROOM
- ELEVATOR
- SHOP



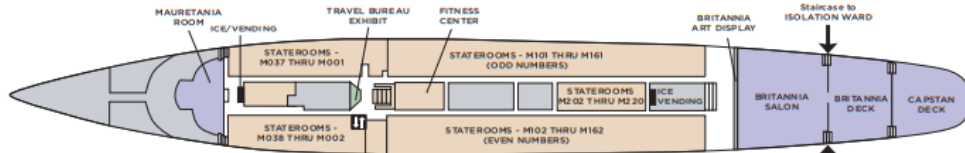
## SUNDECK



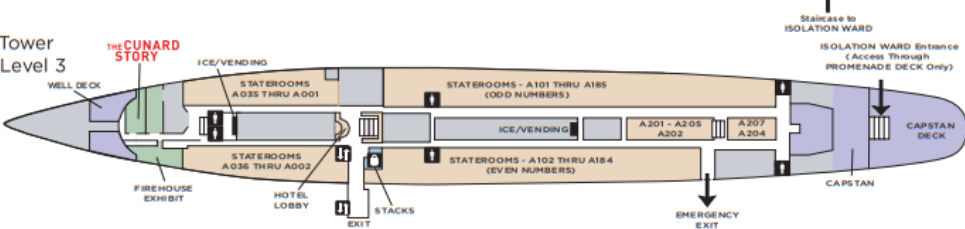
## PROMENADE DECK Exterior Tower Elevator Level 4



## M-DECK



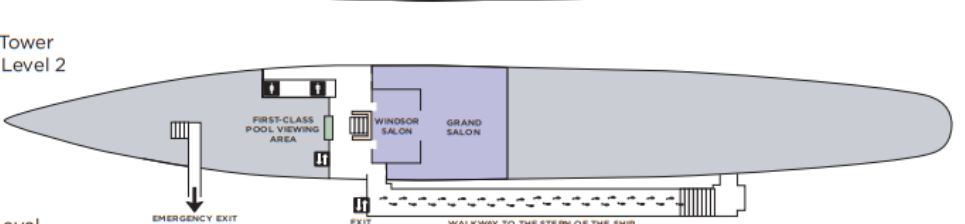
## A-DECK Exterior Tower Elevator Level 3



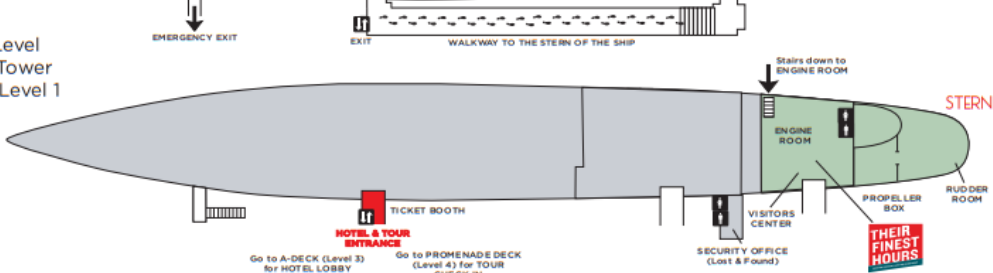
## B-DECK



## R-DECK Exterior Tower Elevator Level 2



## D-DECK Ground Level Exterior Tower Elevator Level 1



### ATTRACTIONS & HISTORICAL EXHIBITS

- BRIDGE & OFFICERS' QUARTERS  
Sports Deck, Forward
- COMMODORE'S OFFICE  
Promenade Deck, Midships
- ENGINE ROOM  
D-Deck, Aft
- FIREHOUSE EXHIBIT  
A-Deck, Forward
- ISOLATION WARD  
A-Deck, Aft, Stern
- PRINT SHOP DISPLAY  
D-Deck, Aft
- QUEEN MARY HERITAGE ROOM  
Promenade Deck, Forward, Port
- QUEEN MARY HISTORIC EXHIBIT  
D-Deck, Aft
- RADIO ROOM (W&RO)  
Sports Deck, Midships
- SHIP MODEL GALLERY  
Promenade Deck, Starboard
- SISTERS OF THE SERENITY  
D-Deck, Aft
- THEIR FINEST HOUR EXHIBIT  
D-Deck, Aft
- TRAVEL BUREAU  
M-Deck, Midships
- THE CUNARD STORY  
A-Deck, Forward
- TOUR CENTER  
Promenade Deck, Midships
- THE SHIPYARD  
Promenade Deck, Midships
- WWI GUN  
Promenade Deck, Bow

### SHOPPING

- MARKETPLACE & STARBOARD SHOPPE  
Promenade Deck, Midships
- PICCOLI DELICIES  
Promenade Deck, Midships
- STACKS  
A-Deck, Midships

### HOTEL

- HOTEL LOBBY  
A-Deck, Midships
- FITNESS CENTER  
Between M-Deck and A-Deck, Midships

### DINING

- CHELSEA CHOWDER HOUSE & BAR  
Promenade Deck, Midships
- MIDSHIP MARKETPLACE  
Promenade Deck, Port
- OBSERVATION BAR  
Promenade Deck, Forward
- PROMENADE CAFE  
Promenade Deck, Midships
- ROYAL SUNDAY BRUNCH  
R-Deck Grand Salon

### MEETINGS & RECEPTIONS

- BOARD ROOM  
Promenade Deck, Midships
- BRITANNIA SALON  
M-Deck, Aft
- CAPSTAN ROOM  
A-Deck, Aft
- GRAND SALON  
R-Deck, Midships
- KING'S VIEW ROOM  
Promenade Deck, Starboard, Aft
- MAURETANIA ROOM  
M-Deck, Forward
- QUEEN'S SALON  
Promenade Deck, Midships
- REGENT ROOM  
Promenade Deck, Midships
- ROYAL SALON  
Promenade Deck, Midships
- THE TERRACE  
Sun Deck, Forward
- VERANDAH GRILL  
Sun Deck, Aft
- VICTORIA ROOM  
Promenade Deck, Aft
- WEDDINGS BY QUEEN MARY  
Promenade Deck, Midships
- WEDDING CHAPEL  
Promenade Deck, Aft
- WELL DECK  
A-Deck, Bow Area
- WINDSOR SALON  
R-Deck, Midships

\*Restaurants, shops, tours & exhibit hours may be seasonal and are subject to change pending any special events or private bookings.